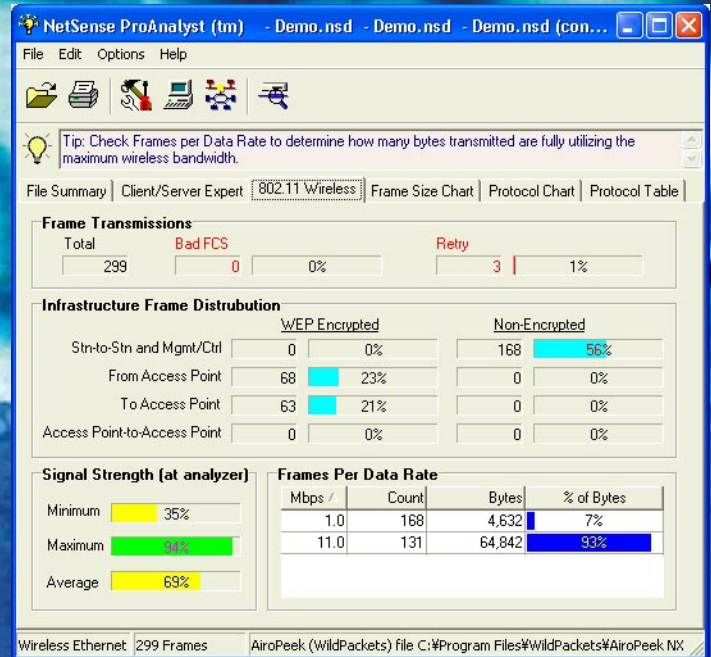
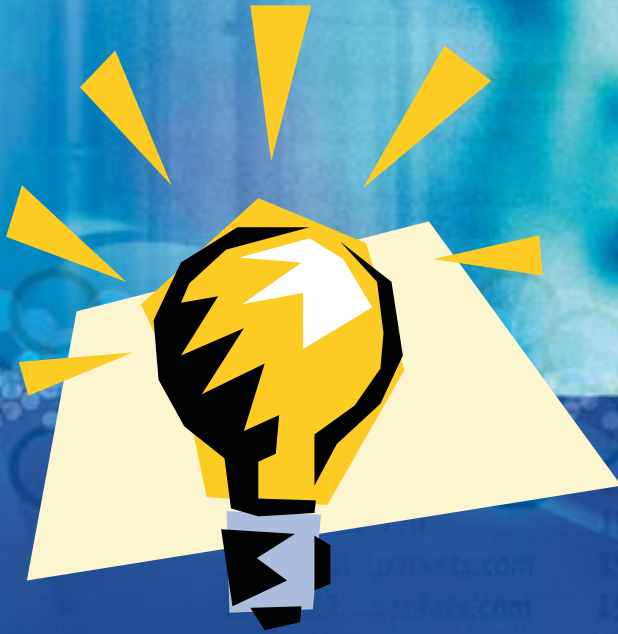


NetSense™

value-added expert network analysis



NetSense™ for Windows

NetSense™ is a comprehensive Windows® application that performs expert analysis of peer-to-peer conversations on packets captured from over 30 different protocol analyzers. The most critical information from each packet is extracted and displayed in several different formats, empowering you to view trace files in a highly graphical and interactive fashion. On-line help is just a click away, and the content-sensitive Tip Wizard is available at any time.

Expert System

The embedded NetSense expert system engine bases its findings on thresholds and heuristics from human experience of analysis of real problems from hundreds of production networks. You can view the expert Client/Server analysis, check out the average and peak performance during a file transfer or HTTP Web

access, view a ring diagnostic map (Token Ring), get instant expert collision analysis and more. NetSense also provides an overview of wireless LAN traffic, including signal strength and traffic breakdowns. NetSense automatically sorts out Clients and Servers, providing true generic client/server expert diagnosis capability for virtually any request/response protocol running on top of IPX and IP.

Critical statistics

Statistics such as average response time and throughput, as well as common problems such as transport retransmissions, local routing (packets that go in, then back out the same router port), TCP resets, zero windows, ICMP error messages, slow response time, low throughput, busy network or server, inefficient client and low throughput are summarized in an easy-to-read table. By sorting on a column such as transport retransmissions or slow response time,

you can get the "Top 10" worst or best performing applications from your trace file. All data can be extracted for custom report generation in your own Windows application.

Packet Visualization

NetSense also has the unique PacketVisualizer™, which provides you with insight into protocol operation by displaying packets in a spatial fashion, allowing you to easily see packet sizes and the delay between them. The PacketVisualizer also contains additional expert analysis not found in the client/server table.

Latency and throughput analysis

Detailed round trip packet analysis of command-response packets is available, showing you the best, worst, and average delay. In a similar fashion, throughput is also analyzed.



"What if" analysis

Using data from the latency analysis as a starting point, the NetSense "What If" feature allows you to perform load and response time analysis under a variety of scenarios, allowing you to vary network delay, packet sizes, data transmission rates, and more.

SmartNames

In many display windows, NetSense provides a "SmartNames" option that can be enabled to show device name translations for addresses in a loaded packet trace. NetSense provides name translations in two ways. If there are names embedded in any IP or IPX packets contained in the file, it will use that information and substitute a name for an address for every instance of that device in any window allowing name for address substitutions. NetSense can read user-defined or resolved names and IP addresses from EtherPeek, TokenPeek, or AiroPeek Name Tables.

NetSense Features

- 802.11 Wireless Summary Tab
- Expert Client/Server Analysis
- PacketVisualizer™ Expert Detection
- Customizable 3D Pie Charts
- Content Sensitive Tip Wizard
- Common Protocol Problems Identified
- Peer-to-Peer Latency Calculation
- Peer-to-Peer Throughput Calculation
- "What If" Response Time Analysis
- Global Statistics Including DLC
 - Encapsulation Breakdowns
- Breakdown of all Protocols in the Trace
 - Ethernet Collision Fragment Analysis
 - Unique Token Ring Diagnostic Map
 - Color Keyed Data Link Layer (DLC)
- Network Layer Peer Maps

System Requirements

The recommended operating systems for NetSense include Windows 2000 (Service Pack 3 or later) and Windows XP (Service Pack 1 or later).

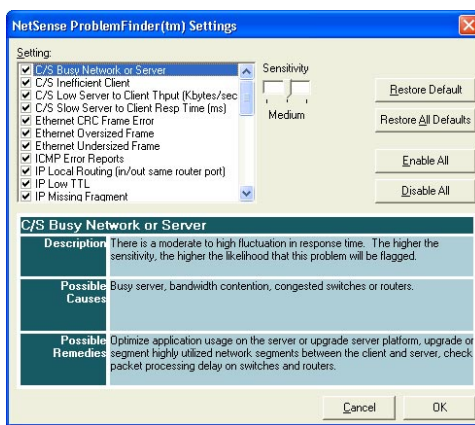
Also tested on Windows 98/ME/NT 4.0 Workstation with Service Pack 6a.

Ordering Information

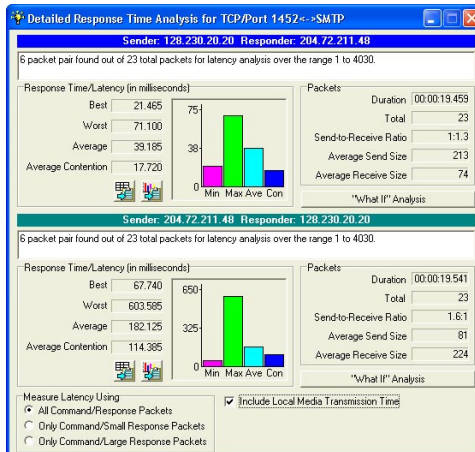
WildPackets products are available from our Channel Partners, directly from WildPackets, or from our electronic purchase area at:

www.wildpackets.com/purchase

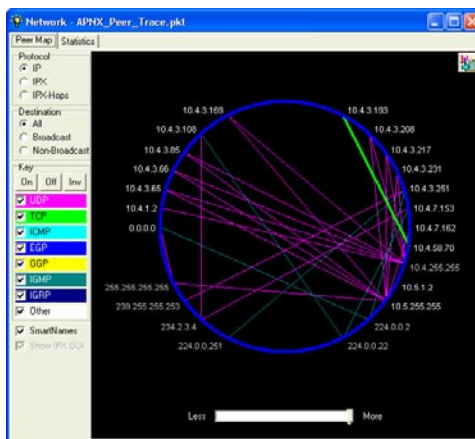
Copyright © 2004 WildPackets inc. All Rights Reserved. NetSense is a trademark of WildPackets, Inc. All other product names and trademarks are the property of their respective companies.



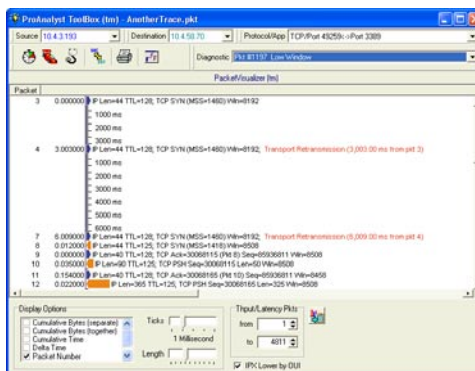
The Problem Finder



Response Time/Latency Analysis



Station Peer Map



ProAnalyst Toolbox

WildPackets, Inc.

Since 1990, WildPackets has been delivering real-time fault analysis solutions that enable the world's leading organizations to keep their networks running securely and reliably, day after day. From the desktop to the datacenter, from wireless LANs to Gigabit backbones, on local segments and across distributed networks, WildPackets products enable IT organizations to quickly find and fix problems affecting mission-critical network services. WildPackets products are sold in over 60 countries through a broad network of channel and strategic partners.

More than 5,000 customers, spanning all industrial sectors and including 80% of the Fortune 1000, use WildPackets products daily to troubleshoot networks and maximize network uptime. WildPackets customers include Agilent, Cisco Systems, Comcast, EDS, Microsoft, Siemens AG, Qualcomm, Unisys, Motorola, and Deutsche Bank. Strategic partners include Aruba, Atheros, Cisco, 3Com, Intel and Symbol Technologies. For further information, please visit www.wildpackets.com.

For more information, visit www.wildpackets.com/products

WildPackets

1340 Treat Blvd, Suite 500
Walnut Creek, CA 94597
(925)937-3200
fax (925)937-3211

www.wildpackets.com