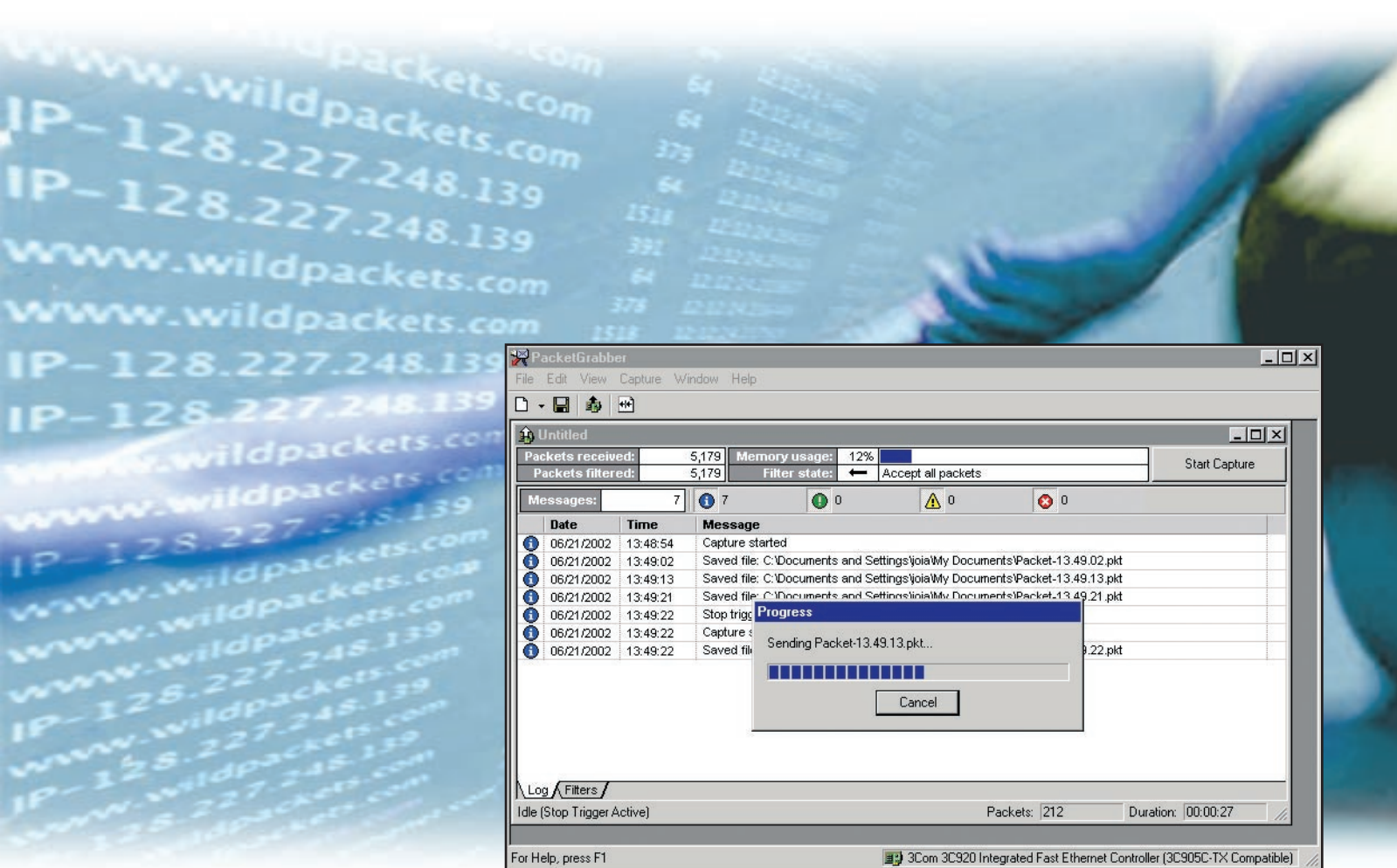


PacketGrabber™

remote packet capture utility



PacketGrabber can be pre-configured to capture packets and forward them to the administrator automatically.

Remote Packet Capture with PacketGrabber™

PacketGrabber extends the reach of EtherPeek™ and EtherPeek NX™ across the Enterprise, collecting trace files at any network location. These packet traces can be forwarded automatically to the network administrator for post-capture analysis. PacketGrabber's AutoCapture feature allows a network administrator to pre-configure packet capture options, completely freeing a remote user from any required configuration or input. PacketGrabber is easy to install and configure for a variety of operating environments.

AutoCapture

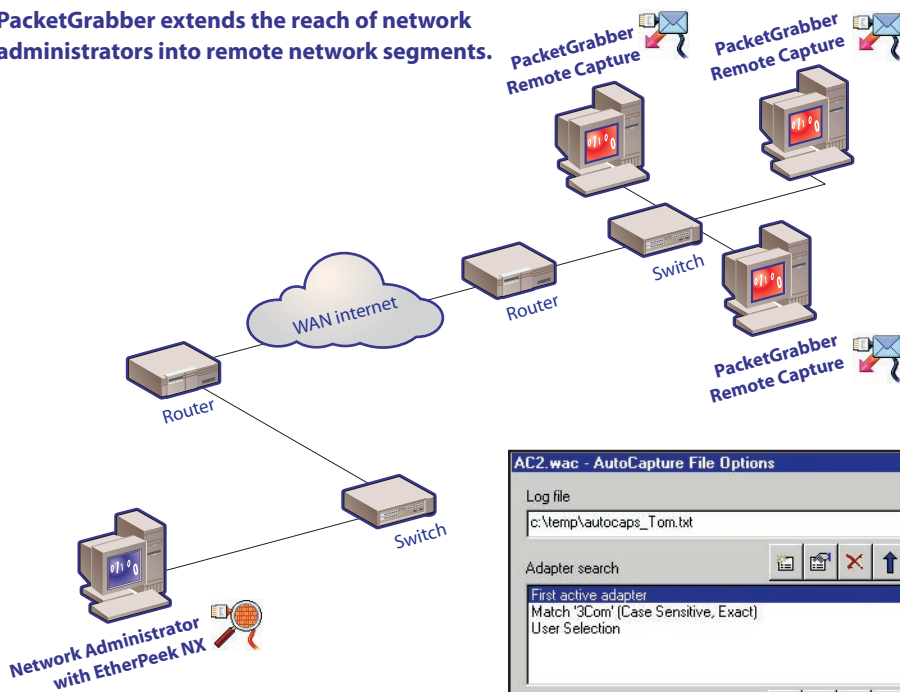
AutoCapture is at the core of PacketGrabber's remote capture, enabling smooth trace file collection with a minimum of user intervention. AutoCapture allows you to set up PacketGrabber to select an adapter automatically and start a number of capture windows with varying buffer sizes. AutoCapture also makes troubleshooting easier with preconfigured triggers and filters to focus on very specific traffic. Once capture is completed, PacketGrabber can transfer the capture files using email, ftp, or a shared volume. All of the settings are saved in an AutoCapture template for delivery to a remote user, who simply double-clicks on that file to open it and initiate the packet capture with any pre-configured options. Additionally, the network administrator may choose to configure a machine to launch PacketGrabber at a specified time by employing the Windows Task Scheduler.

Post-capture Analysis in EtherPeek and EtherPeek NX

Once PacketGrabber has been distributed across the Enterprise network to collect and forward important trace files, powerful post-capture analysis is performed in EtherPeek or EtherPeek NX. Sophisticated graphing and trending features allow the analysis of any node, protocol, network or summary statistic. This data can be displayed, reviewed, and analyzed employing the breadth of EtherPeek or EtherPeek NX diagnostic capabilities. View trends through a variety of graph options from within the program. Output data in enhanced XML format for web access, or save statistics in tab-delimited form that can be exported to an external charting application.



PacketGrabber extends the reach of network administrators into remote network segments.



Distributed Network Solution

Advances in technology have resulted in mission-critical data traversing ever expanding Enterprise networks. These increasingly complex networks are often difficult to access and troubleshoot. PacketGrabber ensures that, regardless of physical geography or network topology, your ability to analyze remote segments is available right at your desktop.

Multiple Simultaneous Captures

As with all WildPackets "Peek" products, PacketGrabber has the ability to open multiple live capture windows simultaneously. This means that new capture windows can be created to focus on specific traffic elements discovered in an overall traffic capture window. These focused captures can be easily opened with EtherPeek NX, which provides independent expert and Peer Map analysis of all open capture windows.

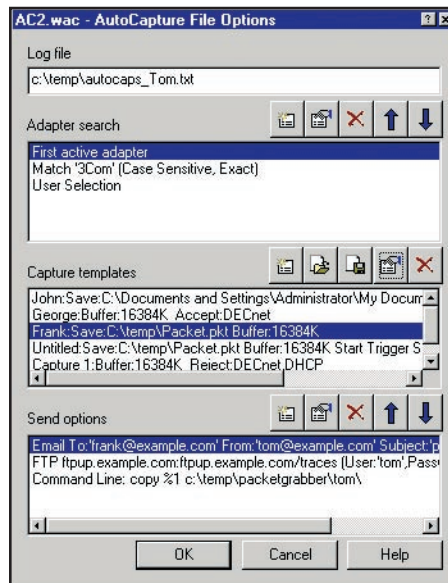
Important Licensing Information

PacketGrabber license agreement does not allow for the free distribution of the software throughout your network. If you would like to deploy PacketGrabber on multiple workstations, or distribute it throughout your Enterprise for remote troubleshooting and data capture, you must purchase additional EtherPeek/ EtherPeek NX licenses, or purchase a PacketGrabber site license. For more information on PacketGrabber licensing, please contact our Sales Department.

Ordering Information

WildPackets products are available from our Channel Partners; by calling (800) 466-2447; directly from sales@wildpackets.com; or from the electronic purchase area at: www.wildpackets.com.

Copyright © 2004 WildPackets. All Rights Reserved. PacketGrabber and EtherPeek are trademarks of WildPackets, Inc. All other product names and trademarks are the property of their respective companies.



AutoCapture options allow you to pre-configure adapter settings, capture and send options, and much more.

Supported Operating Systems

Windows XP (Service Pack 1 or later) or Windows 2000 (Service Pack 3 or later) and Internet Explorer 6.0 *Also tested on Windows NT 4.0 (Service Pack 6a)

Minimum System Requirements

PacketGrabber supports most rack mount, desktop and portable computers as long as the basic system requirements to run the supported operating systems are met. Depending on traffic and the particular usage of PacketGrabber, the requirements may be substantially higher.

Recommended System

P4 1.7 GHz; 512 MB RAM; 20 GB Available HD Space

Heavier Usage Recommendations

Factors that contribute towards superior performance include, high speed CPU, dual CPUs, two or more GB of RAM, high performance disk storage subsystem (RAID 0), and as much additional hard disk space as is required to save the trace files that you plan to manage.

WildPackets, Inc.

Since 1990, WildPackets has been delivering real-time fault analysis solutions that enable the world's leading organizations to keep their networks running securely and reliably, day after day. From the desktop to the datacenter, from wireless LANs to Gigabit backbones, on local segments and across distributed networks, WildPackets products enable IT organizations to quickly find and fix problems affecting mission-critical network services. WildPackets products are sold in over 60 countries through a broad network of channel and strategic partners.

More than 5,000 customers, spanning all industrial sectors and including 80% of the Fortune 1000, use WildPackets products daily to troubleshoot networks and maximize network uptime. WildPackets customers include Agilent, Cisco Systems, Comcast, EDS, Microsoft, Siemens AG, Qualcomm, Unisys, Motorola, and Deutsche Bank. Strategic partners include Aruba, Atheros, Cisco, 3Com, Intel and Symbol Technologies. For further information, please visit www.wildpackets.com.

For more information, visit www.wildpackets.com/products

WildPackets

1340 Treat Blvd, Suite 500
Walnut Creek, CA 94597
(925)937-3200
fax (925)937-3211

www.wildpackets.com